

PASTE - AND READY!



ROSETTES

For fixing a ceiling light a drilling has to be made in the middle of the rosette. Lay a thin coat of DECOSA Universal Glue on the clean backside of the rosette.



Fix the rosette (position marked before with a pencil) and press it into place. The underground has to be clean, dry, solid, smooth and capable of bearing. Remove excess glue immediately with a damp sponge.



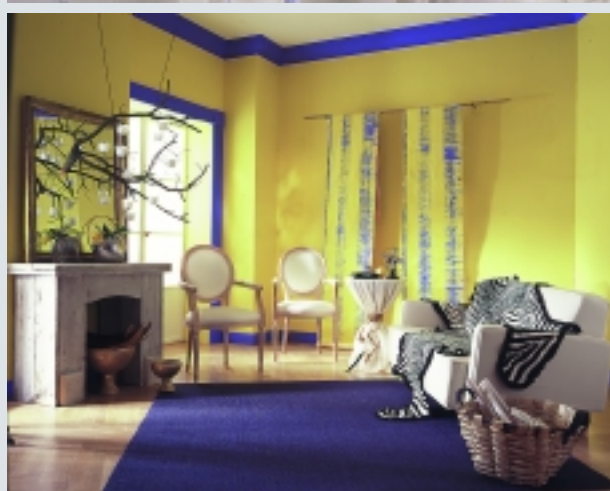
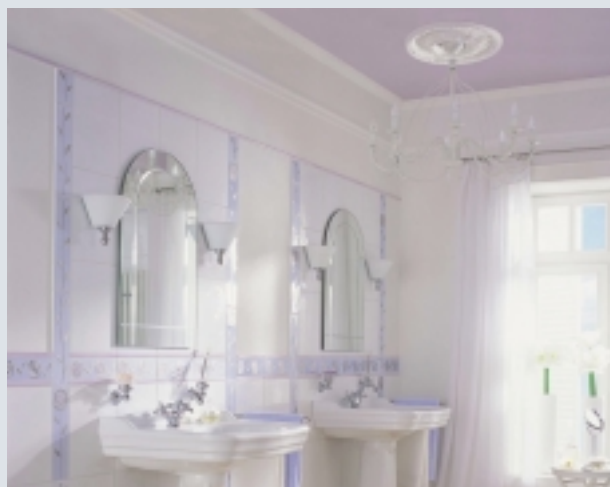
DECORATIVE COVINGS



Lay a thin coat of DECOSA Universal Glue on the backside of the coving and press it tight into place. The underground has to be clean, dry, solid, smooth and capable of bearing.



While adding further coverings some glue must absolutely be laid also on the side edges. Remove excess glue immediately with a damp sponge.

DECOSA. ROOMS FOR PERSONALITIES.



DECORATION	DECOSA®	
	MODERN	CLASSIC
		
PROCEEDING		



Saarpor Klaus Eckhardt GmbH Neunkirchen Kunststoffe KG
Industriegebiet Krummeg • D-66539 Neunkirchen
Telefon ++49 (0) 6821/9407-0
www.saarpor.de • e-mail: info@saarpor.de

CUT TO SIZE. NOTHING EASIER!



EDGING CORNER INSIDE

Decorative covings corners can easily be cut with the help of a mitre-box.

Put the coving into the mitre-box, with the decorative surface upwards, considering the covings surfaces for ceiling resp. for wall.

With a saw, the right coving part is cut in the left slot, the left coving part is cut in the right slot.



EDGING CORNER OUTSIDE

The right coving part is cut in the right slot, the left part in the left slot.



COLORS FOR COVINGS: A DIFFERENT WAY TO PAINT

It doesn't matter: Decorative covings can be painted before or after the gluing - covings made of polystyrene with solvent free dispersion color, covings made of polyurethane with any kind of color. Nevertheless, beside the entire painting by brush or roll, decorative effects can be reached before gluing with the help of simple tools and methods.



EFFECTS THROUGH PATINATING

Decorative color effects can be reached through dabbing the first entire painting wet-in-wet with the help of a thick bristled brush.



ELEGANT MARBLING

Press a crumpled cloth wet-in-wet into the entire painting. The resulting marbling pattern causes an elegant color effect.



JUST WIPE!

The upper contours of the entire painted covings are subsequently wiped. A fascinating three-dimensional look is reached through the resulting brighter contours.

TIMELESS BEAUTIFUL - DECORATIVE ROSETTES

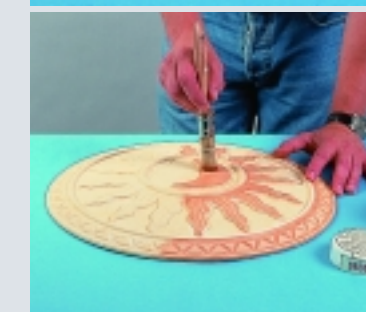


Ceiling lights can develop their entire effects suspending on a decorative rosette. Rosettes can also be used as a decorative element for wall and ceiling design. Just like decorative covings, rosettes can also be painted before or after their gluing.



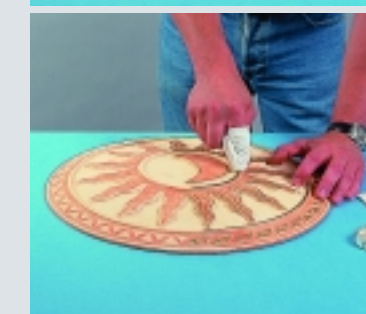
PUT GROUND- COLOR

The rosette is painted entirely with a ground-color.



ORNAMENTAL COLOR FOR DECORATION

After the drying of the ground-color the rosettes elegant design can be intensified through additional ornamental colors.



THE CULMINATION: GOLDEN CONTOURS

Show off the high class elegance of the rosette through a final decoration with a special gold colour!